



Military-Fasteners.com

P/N MS21061-06

## Description

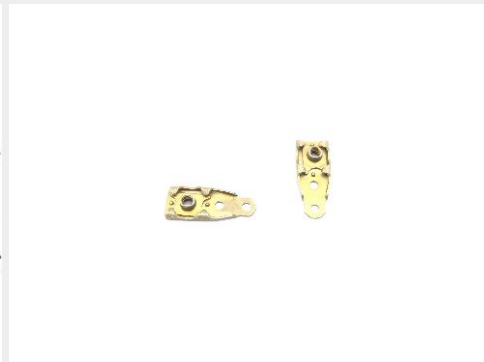
Thread Size: 1/8", Nut Length: 1", Nut Height: 1/4",

\* Manufacturer certifications are shipped with your order FREE of charge

Order this part online

## Additional Information

SKU / Model:	MS2106106
Minimum Qty (MOQ):	10
NSN:	5310-00-778-9461
Schedule B:	7318.16.0085
ECCN:	EAR99
National Motor Freight:	093486, Bolts,nuts Or Screws, Noi (sub 3)



\* See page 2 for technical characteristics

## P/N MS21061-06 Specifications

<b>Thread Class:</b>	3b
<b>Thread Direction:</b>	Right-hand
<b>Locking Feature:</b>	Prevailing Torque All Metal Design
<b>Mounting Hole Diameter:</b>	0.098 Inches Minimum And 0.103 Inches Maximum
<b>Nut Style:</b>	Plate
<b>Nut Length:</b>	1.051 Inches Maximum
<b>Nut Height:</b>	0.203 Inches Maximum
<b>Plate Thickness:</b>	0.032 Inches Maximum
<b>Plate Width:</b>	0.290 Inches Minimum And 0.422 Inches Maximum
<b>Nut Mounting Provision:</b>	Straight Holes
<b>Mounting Hole Arrangement Style:</b>	2 Holes
<b>Distance From Aperture Center To Mounting Hole Center:</b>	0.339 Inches Minimum And 0.349 Inches Maximum
<b>Center To Center Distance Between Mounting Holes Along Length:</b>	0.310 Inches Minimum And 0.314 Inches Maximum
<b>Temp Rating:</b>	450.0 Deg Fahrenheit Nominal
<b>Thread Series:</b>	Unc
<b>Features Provided:</b>	Floating Nut
<b>Thread Quantity Per Inch:</b>	32
<b>Hardness Rating:</b>	49.0 Rockwell C Maximum
<b>Nominal Thread Size:</b>	0.138 Inches
<b>Material:</b>	Steel Overall
<b>Surface Treatment:</b>	Cadmium Overall
<b>Surface Treatment Document And Classification:</b>	Qq-p-416,ty 2,cl 3 Fed Spec Single Treatment Response Overall

## How to Order

Order this self-locking nutplate from our inventory online by visiting [https://military-fasteners.com/nuts/self\\_locking+nutplates/MS21061-06](https://military-fasteners.com/nuts/self_locking+nutplates/MS21061-06) and selecting the quantity you want then click "add to cart". Once items are in your cart you can check out [here](#) to complete your order.