

Description

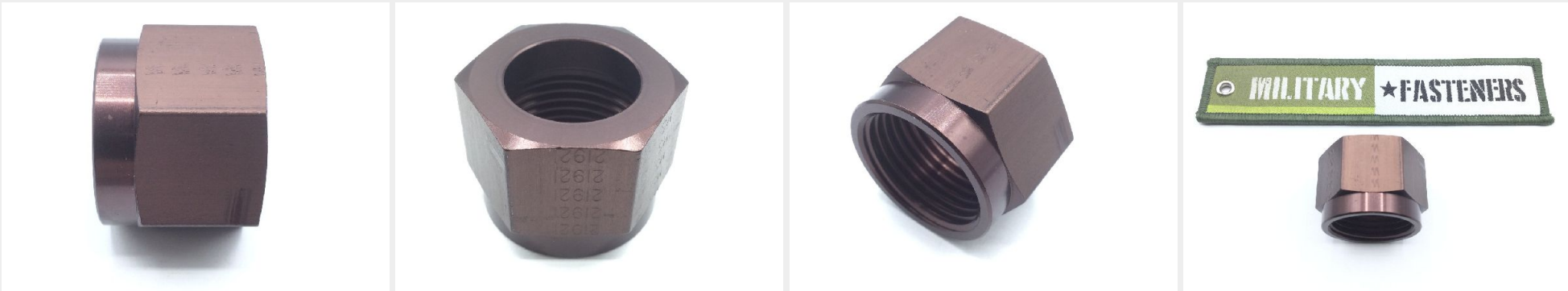
tube outside diameter: 3/4", sleeve coupling, flareless , aluminum alloy, MS21921 series nut

* Manufacturer certifications are shipped with your order FREE of charge

Order this part online

Additional Information

SKU / Model:	MS2192112W
Minimum Qty (MOQ):	2
NSN:	4730-00-191-6850
ECCN:	EAR99
National Motor Freight:	013540, Alum Nuts



P/N MS21921-12W Specifications

Thread Class:	3b
Thread Direction:	Right-hand
Fabrication Method:	Machined
Nut Style:	Tube Coupling
Nut Height:	1.000 Inches Nominal
Width Across Flats:	1.250 Inches Nominal
Length To Shoulder:	0.687 Inches Nominal
Smallest Inside Diameter:	0.826 Inches Nominal
Thread Series:	Unj
Thread Quantity Per Inch:	12
Nominal Thread Size:	1.062 Inches
Nominal Tube Outside Diameter:	0.750 Inches
Seat Angle:	0.45 Degrees Nominal
Material:	Aluminum Alloy 2024 Overall Or Aluminum Alloy 7075 Overall
Material Document And Classification:	Qq-a-225/9 Fed Spec 1st Material Response Overall Or Qq-a-225/6 Fed Spec 2nd Material Response Overall
Surface Treatment:	Anodize Overall
Specification/standard Data:	96906-ms21921 Government Standard

How to Order

Order this tube coupling nut from our inventory online by visiting <https://military-fasteners.com/nuts/tube+coupling+nuts/MS21921-12W> and selecting the quantity you want then click "add to cart". Once items are in your cart you can check out [here](#) to complete your order.